

SKIN SOFT COLLECTION – Gelintex



#3528C - YARN DYED NYLON(N66)/BLACK SPANDEX INTERLOCK WITH ANTI-BACTERIAL/WICKING

width: 50/52" weight: 247gsm



#3818B - POLY/SPANDEX FRENCH TERRY B/SIDE PEACH WITH ANTI-BACTERIAL/WICKING/UV-CUT

width: 58/60" weight: 204gsm



#3714 - MICRO POLY/SPANDEX PREMIUM SOFT WITH WICKING

width: 58/60" weight: 107gsm



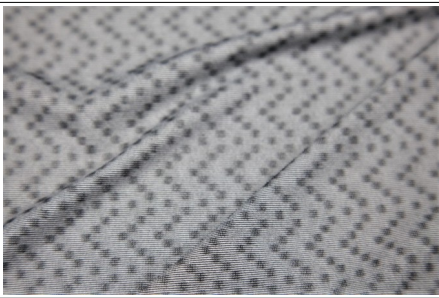
#2705G - NYLON/SPANDEX COOLTOUCH SJ WITH ANTI-BACTERIAL/WICKING

width: 56/58" weight: 148gsm



#3793P - NYLON/POLY/SPANDEX COTTON-LIKE SJ 2 SIDE PEACH WITH ANTI-BACTERIAL/WICKING/UV-CUT

width: 58/60" weight: 200gsm



#3652W - CD-POLY/SPANDEX MATRIX JACQUARD KNIT WITH ANTI-BACTERIAL/WICKING

width: 55" weight: 125gsm



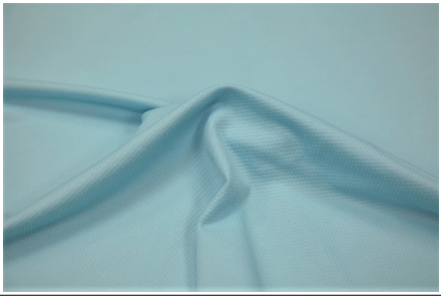
#2142Q - POLY/SPANDEX 4-WAY STRETCH ON ARCTIC CAMO PRINT WITH ANTI-BACTERIAL/WICKING

width: 60/61" weight: 137gsm



#3818W - POLY/SPANDEX HIGH GAUGE SJ B/SIDE PEACH WITH UV-CUT/WICKING

width: 58/60" weight: 120gsm



#3503C - NYLON/SPANDEX DOT KNIT 2 SIDE PEACH WITH ANTI-BACTERIAL/WICKING

width: 58/60" weight: 139gsm



#3677 - MICRO POLY PREIMUM SOFT SJ WITH ANTI-BACTERIAL/3M WICKING

width: 60/62" weight: 145gsm