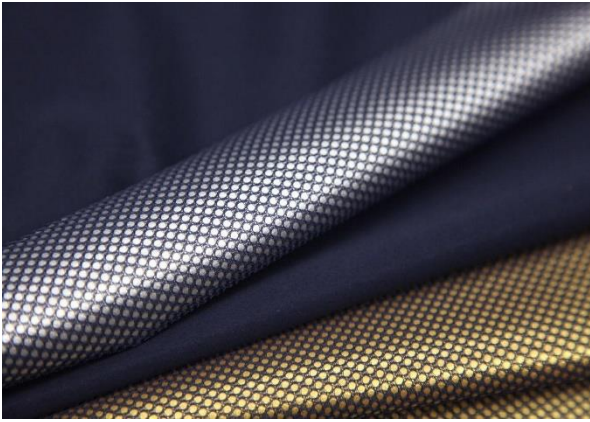
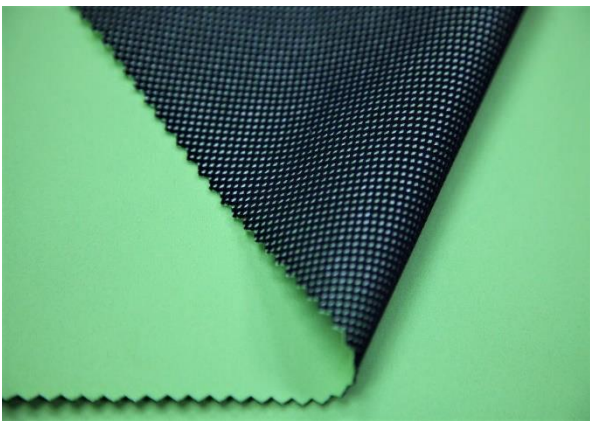


OUTDOOR COLLECTION



**#3769 – MICROPOLY/POLY TRICOT MESH WITH BONDED HEAT MEMBRANE
(DWR/WINDPROOF/HEAT RETAINING)**

58/60" X 157 gsm



#3705A – MICROPOLY/POLY 2X2 MESH BONDED DWR MEMBRANE (DWR, WINDPROOF)

58/59" X 196 gsm



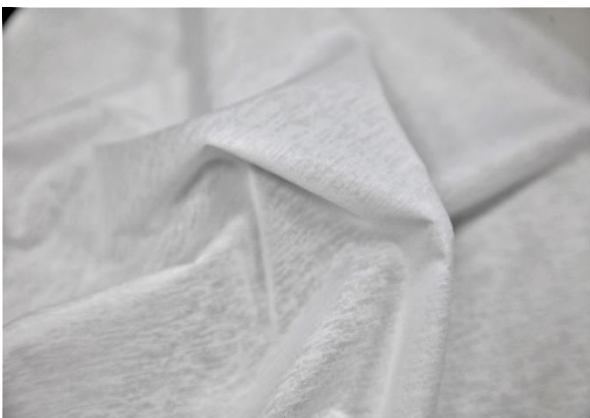
#3766 – LYCRA T400® ELASTERELL-P/POLY CHECKER WITH BRUSH (THERMAL/QUICKDRY) – SORONA YARN

58/60" X 230 gsm



#3764 – COTTON/PP YARN 2-TONE JERSEY (MOISTURE TRANSFER WICKING/THERMAL) – BIO-DEGRADABLE

70/72" X 150 gsm



#3780 – SPIDER YARN® WITH ULTRA THIN BONDED MEMBRANE (DWR, W/P, BREATHABLE MOISTURE)

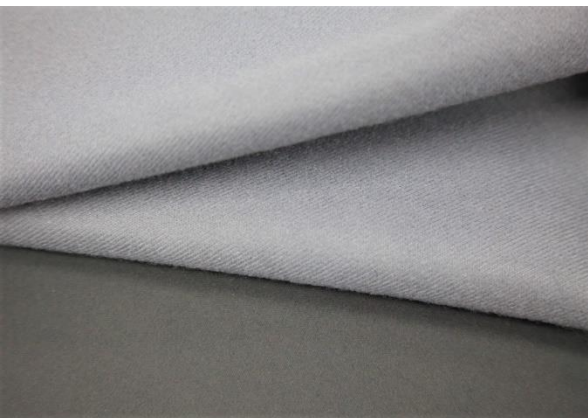
59/61" X 100 gsm



#PF579 – POLY IN ANTI-PILLING FLEECE BONDED PU MEMBRANE (W/R, BREATHABLE MOISTURE)
58/60" X 318 gsm



#BM028 – FACE SIDE W/R YARN/BACK SIDE WICKING YARN/LYCRA INTERLOCK (PERMANENT QUICKDRY/WATER RESISTANT)
53/54" X 222 gsm

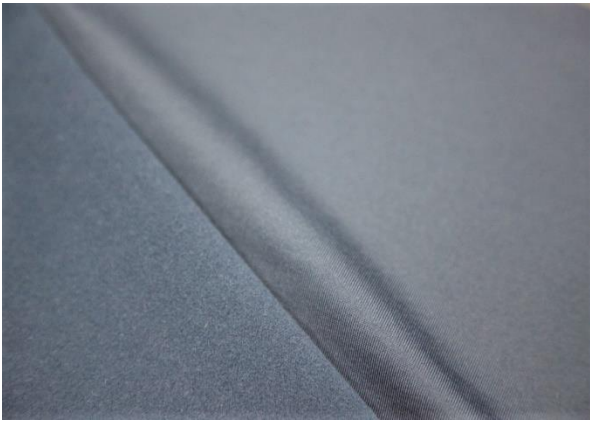


#BM015 – MICROPOLY INTERLOCK/TRICOT BRUSH IN BONDED MEMBRANE (WATER RESISTANT/BREATHABLE)
56" X 191 gsm



#2402U – SIDE BY SIDE POLY IN CERAMIC PRINT BONDED MEMBRANE (WATER RESISTANT/WINDPROOF)

58/60" X 100 gsm



#1517Z – RePET®/LYCRA 4-WAY STRETCH ANTI-PILLING BRUSH (DWR)

58/60" X 236 gsm